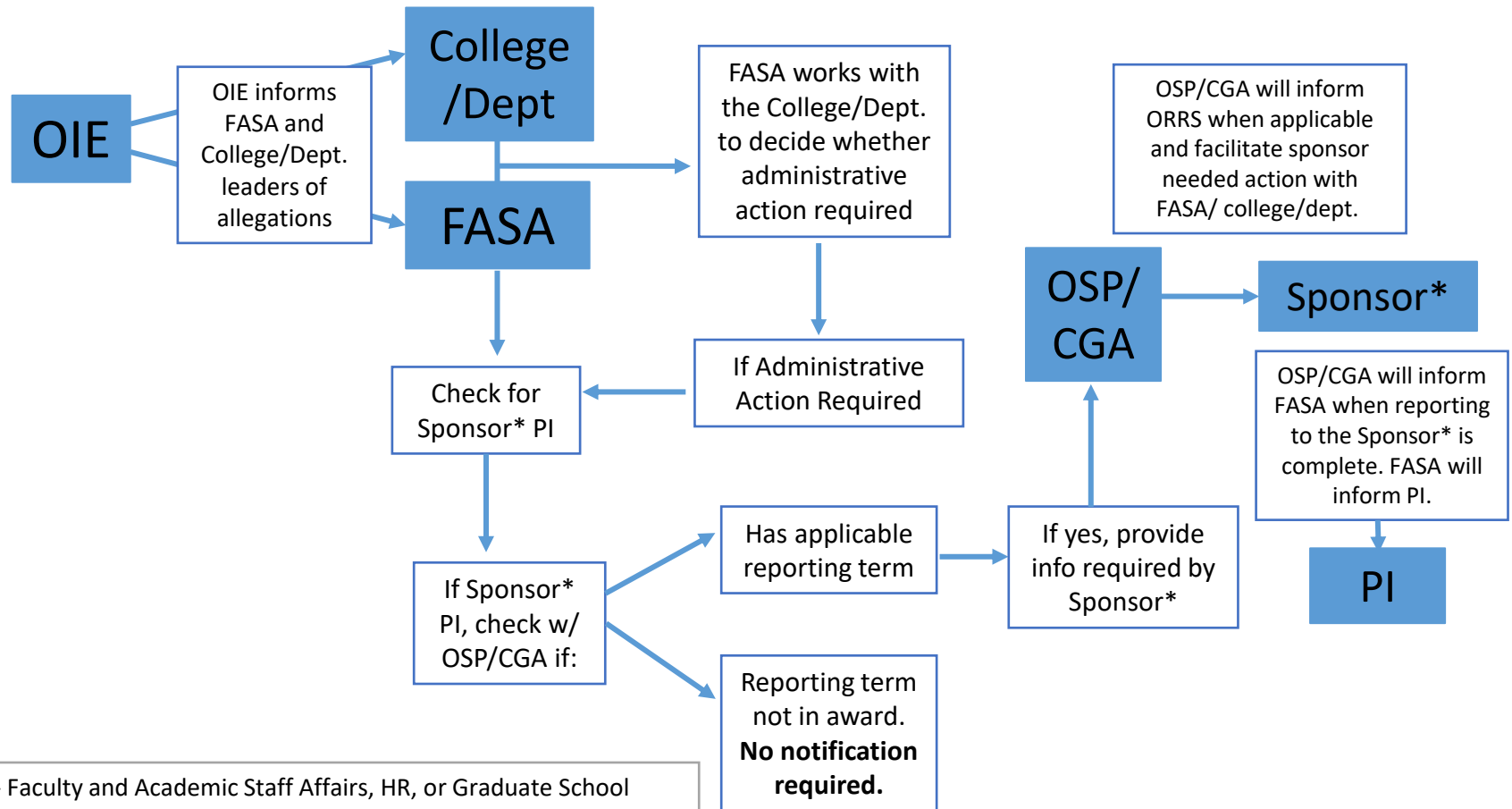


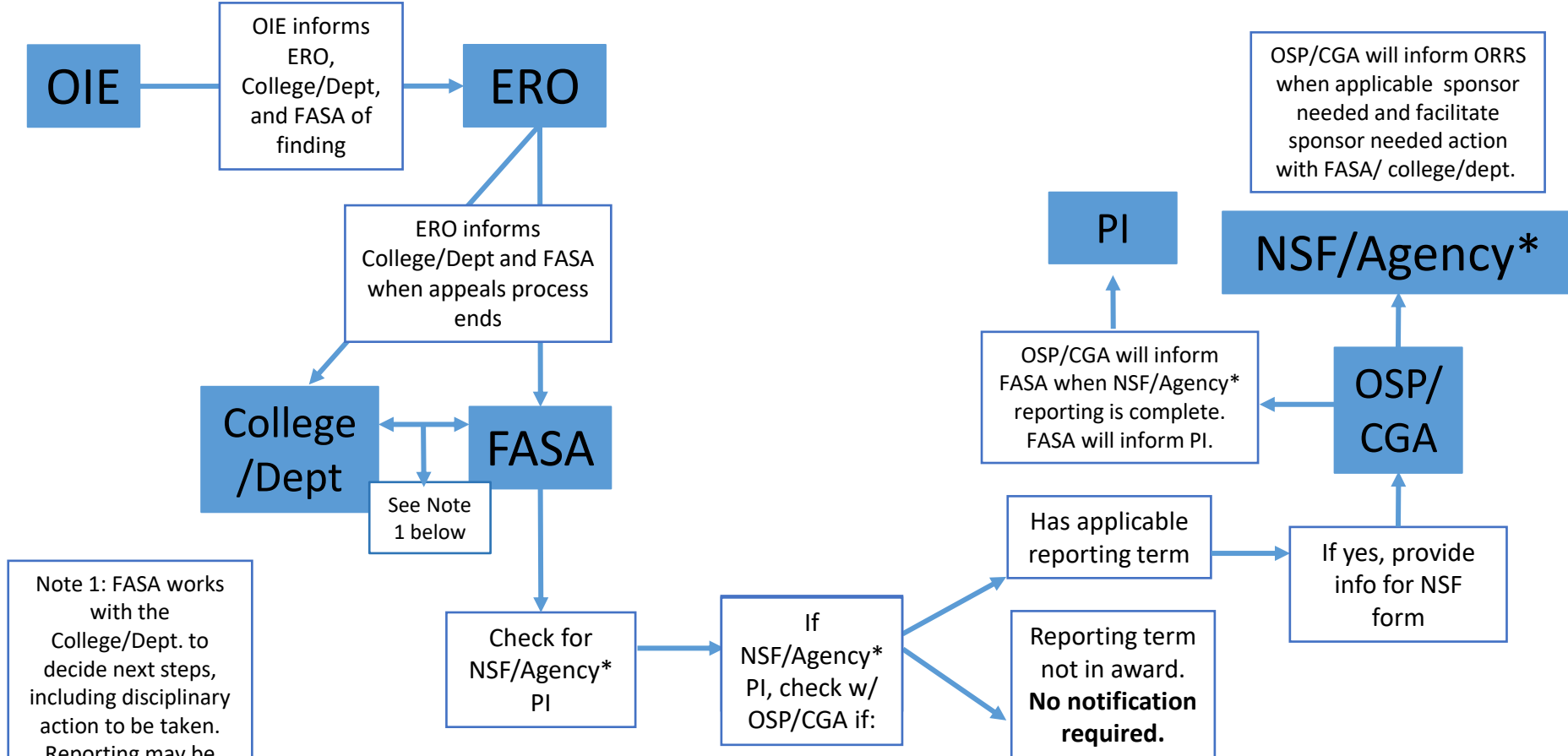
# Reporting of Administrative Action related to Allegations



**FASA**- Faculty and Academic Staff Affairs, HR, or Graduate School as appropriate  
**OIE**- Office of Institutional Equity  
**ORRS**- Office of Research Regulatory Support  
**OSP/CGA**- Office of Sponsored Programs/Contract and Grant Administration  
**PI**- Principal Investigator  
**\*Sponsor**- Currently, there are four sponsors with harassment reporting requirements: NSF, NIH, NASA, and Simons Foundation.

Graph is simplified for readability and provided for informational purposes. Please see [MSU process for full description.](#)

# Reporting of Harassment and/or Administrative Action when Finding/Determination



**Note 1:** FASA works with the College/Dept. to decide next steps, including disciplinary action to be taken. Reporting may be required in multiple instances, especially if the discipline action is not determined until after the initial harassment notification to NSF.

**ERO-** Equity Review Officer  
**FASA-** Faculty and Academic Staff Affairs, HR, or Graduate School as appropriate  
**OIE-** Office of Institutional Equity  
**ORRS-** Office of Research Regulatory Support  
**OSP/CGA-** Office of Sponsored Programs/Contract and Grant Administration  
**PI-** Principal Investigator  
**NSF-** National Science Foundation  
 \*Currently, there are four sponsors with harassment reporting requirements: NSF, NIH, NASA, and Simons Foundation.

Graph is simplified for readability and provided for informational purposes. Please see [MSU process for full description.](#)